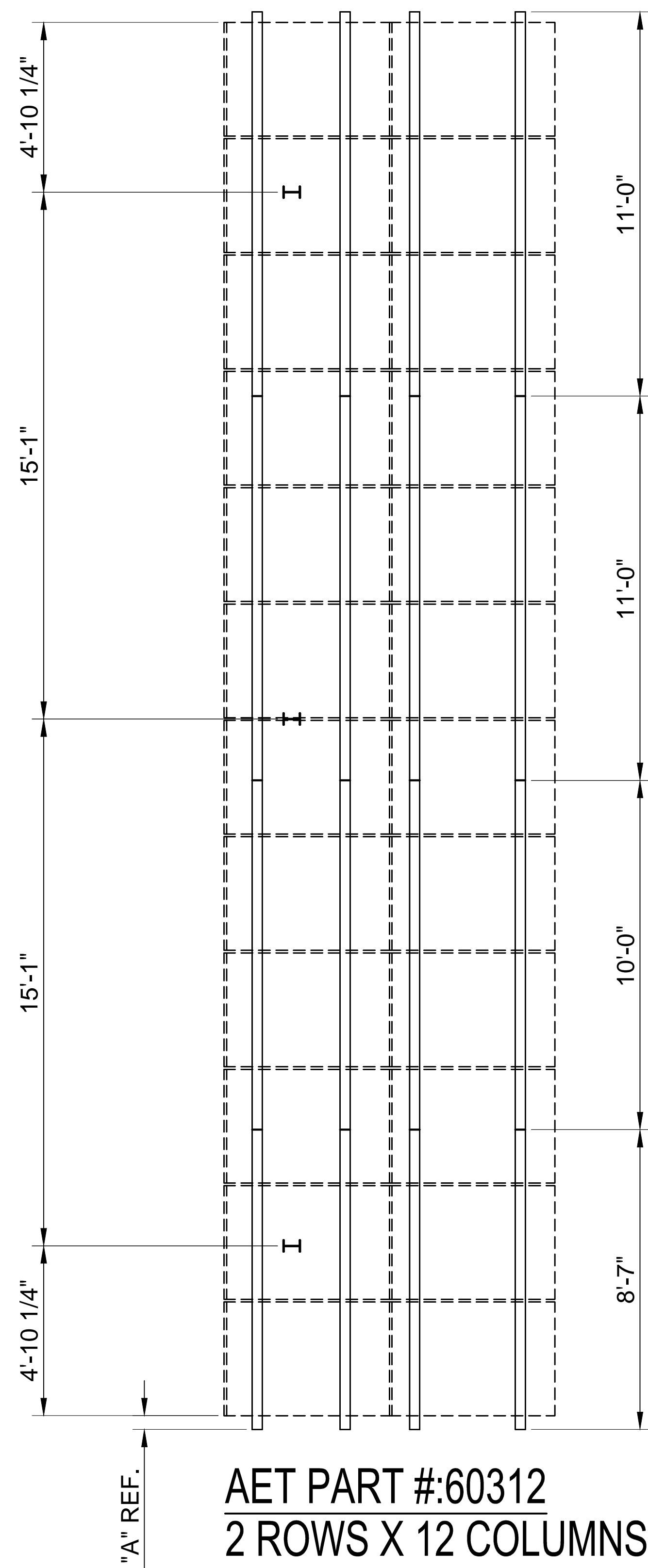
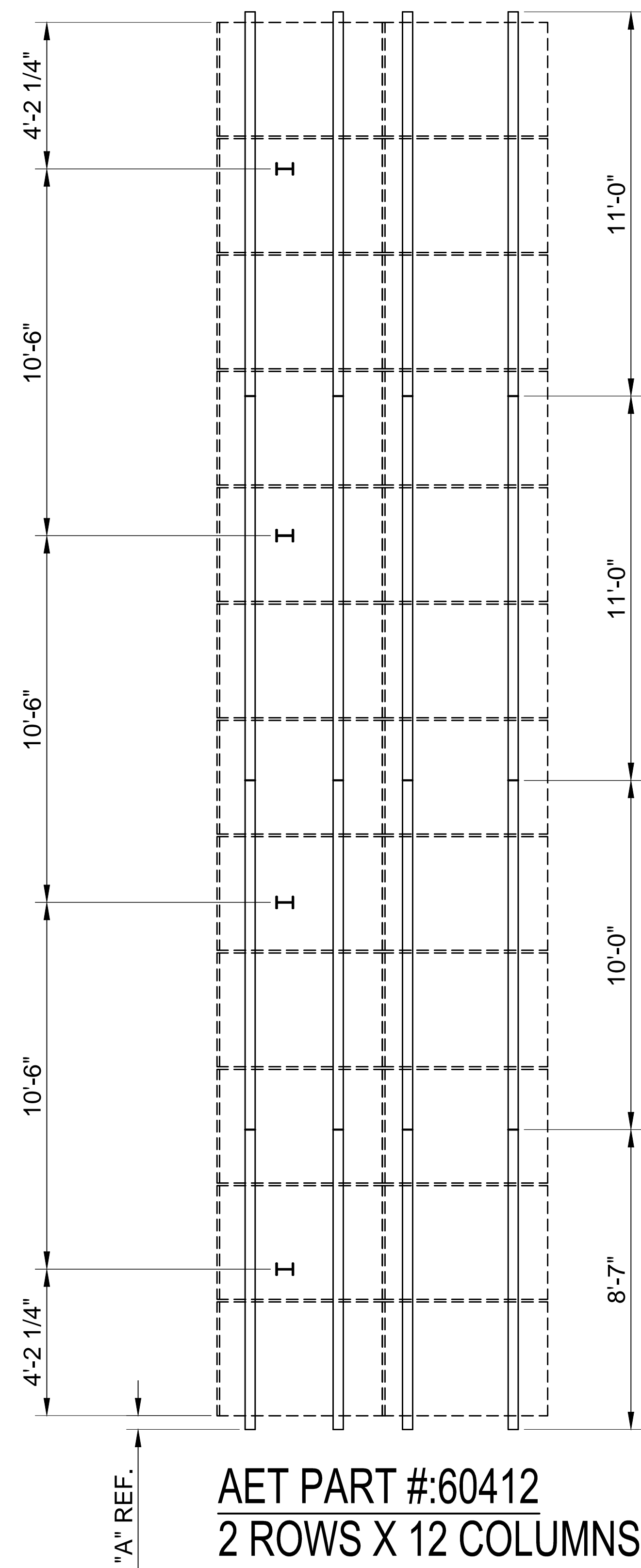


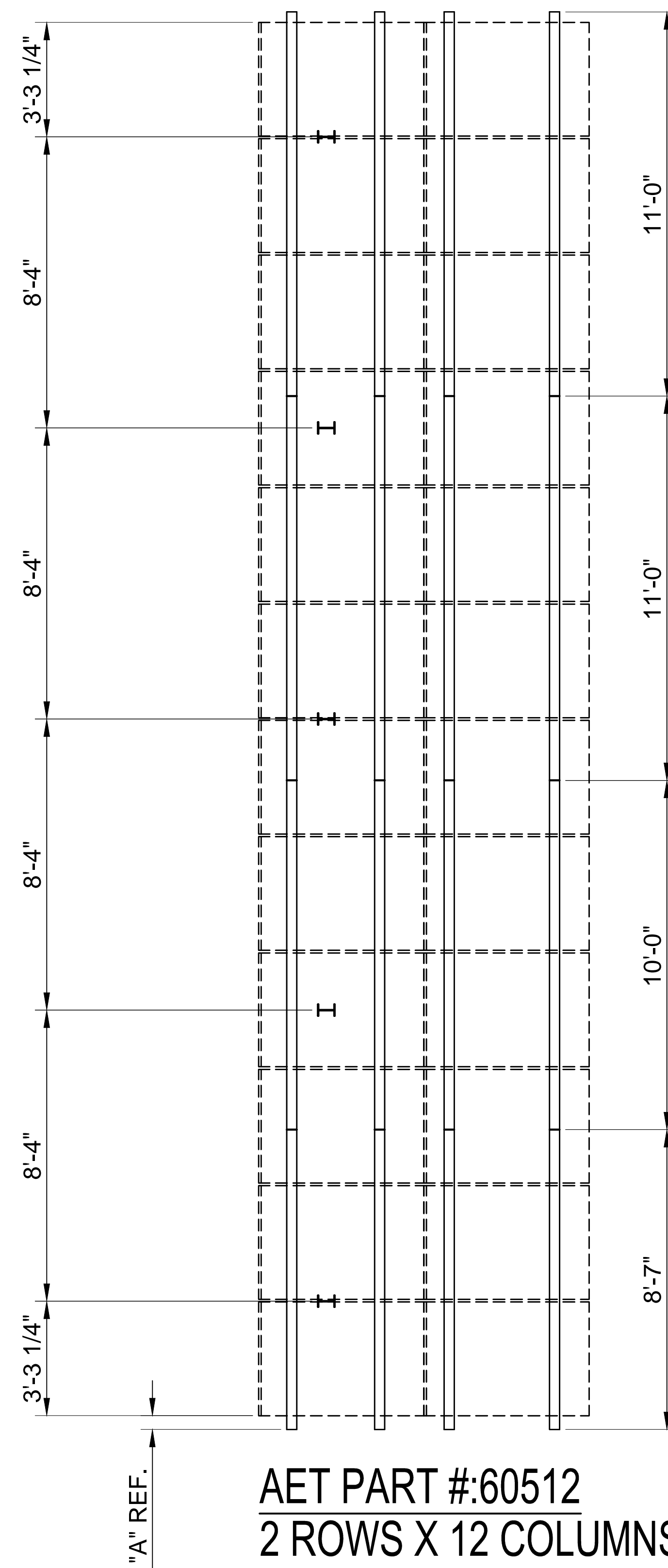
SIDE VIEW - 60 CELL MODULE



AET PART #:60312
2 ROWS X 12 COLUMNS
3 POSTS
60 CELL MODULE



AET PART #:60412
2 ROWS X 12 COLUMNS
4 POSTS
60 CELL MODULE



AET PART #:60512
2 ROWS X 12 COLUMNS
5 POSTS
60 CELL MODULE

REVISIONS						
SYM	DESCRIPTION	DRAWN	CHECKED	APPROVED	DATE	
-	RELEASED FOR PROPOSAL	TJS	RGC	KM	03/11/14	

GENERAL NOTES

- THIS DRAWING CONTAINS CONFIDENTIAL INFORMATION AND IS ISSUED IN CONFIDENCE ON THE CONDITIONS THAT IT BE RETURNED ON DEMAND AND NOT BE COPIED, REPRODUCED, DISCLOSED TO OTHERS OR USED IN THE MANUFACTURE OF THE SUBJECT-MATTER THEREOF WITHOUT THE CONSENT OF APPLIED ENERGY TECHNOLOGIES.
- THIS LAYOUT IS AN APPROXIMATION AND IS INTENDED FOR QUOTING PURPOSES ONLY. ACTUAL SYSTEM SIZE AND/OR LOCATION OF RACKING MAY VARY. IT IS THE RESPONSIBILITY OF THE INSTALLER TO CONFIRM THAT THE LOCATION OF THE RACKING DOES NOT INTERFERE WITH OR BECOME SHADED BY ANY OBSTRUCTIONS. AET ASSUMES NO RESPONSIBILITY OF THE RACKING CONFIGURATION.
- CONTRACTORS ARE TO VERIFY ALL DIMENSIONS AND CONDITIONS IN THE FIELD AND REPORT ANY AND ALL DISCREPANCIES TO AET PRIOR TO CONSTRUCTION / INSTALLATION.

PANEL WIDTH (mm)	"A" (in.)
982	6.75
986	5.75
990	4.75
991	4.50
992	4.25
993	4.00
994	3.75
999	2.75
1000	2.50
1001	2.25

DIMENSION "A"

		GROUND SNOW LOAD (PSF)										
		0	5	10	15	20	25	30	35	40	45	50
ASCE 7-05 WIND SPEED (MPH)	90	3	3	3	3	4	4	4	4	4	4	4
	100	4	4	4	4	4	4	4	4	4	4	5
	110	4	4	5	5	5	5	5	5	5	5	5
	120	5	5	5	5	5	5	5	5	5	5	5

POSTS PER ARRAY - 60 CELL MODULE

BILL OF MATERIAL							
AET PART NO.	DESCRIPTION	72412	72512	73612	60312	60412	60512
-	SOLAR MODULE (NOT INCLUDED)	24	24	24	24	24	24
-	GND MNT SYSTEM 2x12 ARRAY (24 MODULES)	1	1	1	1	1	1
81009-80	Z-PURLIN - 80" OR 6'-8" LONG	X	X	X	X	X	X
81009-103	Z-PURLIN - 103" OR 8'-7" LONG	4	4	4	4	4	4
81009-120	Z-PURLIN - 120" OR 10'-0" LONG	4	4	4	4	4	4
81009-132	Z-PURLIN - 132" OR 11'-0" LONG	8	8	8	8	8	8
81009-144	Z-PURLIN - 144" OR 12'-0" LONG	X	X	X	X	X	X
81069	POST - W6 X 7 - 10'-6" LONG	4	5	6	3	4	5
81039	PLATE - POST TO Z-STRUT CONNECTOR	4	5	6	3	4	5
81072-144	Z-STRUT - 12" LONG FOR 72 CELL MODULE	4	5	6	X	X	X
81072-120	Z-STRUT - 10" LONG FOR 60 CELL MODULE	X	X	X	3	4	5
81080	PURLIN SPLICE - C CHANNEL 1/4IN HOLES	12	12	12	12	12	12
81081	PURLIN SPLICE - C CHANNEL 5/16IN HOLES	12	12	12	12	12	12
81011	L-BRACKET - POST TO STRUT BRACE	4	5	6	3	4	5
81013	PURLIN BRACE - 12" LONG	3	4	5	X	X	X
81012	PURLIN BRACE - 10" LONG	X	X	X	2	3	4
80685-68.25	STRUT BRACE - 68.25" LONG FOR 72 CELL MODULE	4	5	6	X	X	X
80685-57.75	STRUT BRACE - 57.75" LONG FOR 60 CELL MODULE	X	X	X	3	4	5
80919	HEX BOLT - 1/2"-13 x 4.5"	8	10	12	6	8	10
80918	HEX NUT - 1/2" - 13	28	35	42	21	28	35
81026	HEX BOLT 1/2"-13 X 1.25"	8	10	12	6	8	10
80921	CARRIAGE BOLTS - 1/2"-13 X 1.25"	12	15	18	9	12	15
80687	FLAT HARDENED WASHER - 1/2"	44	55	66	33	44	55
81024	FLANGE NUT - 1/4"-20	164	176	188	152	164	176
81023	SCREW - 1/4"-20 DRILL POINT	164	176	188	152	164	176
81016	MID CLAMP ASM	44	44	44	44	44	44
81022	END CLAMP ASM	8	8	8	8	8	8

LOCATE PURLIN BRACE MID WAY BETWEEN POSTS TYP.



Applied Energy Technologies
Engineered Solar Mounting Solutions
www.AETenergy.com
586-466-5073 MAIN
586-466-5074 FAX
22367 STARKS DRIVE
CLINTON TOWNSHIP, MI 48036

ENGINEER SEAL:

NOTE:
PROVIDED ENGINEERING DOCUMENTS AND/OR ENGINEER SEAL ABOVE ARE FOR THE CERTIFICATION OF THE RACKING SYSTEM AND ITS RESISTANCE TO WIND LOADS. THIS IS NOT A CERTIFICATION OF THE STRUCTURAL CAPACITY OF THE BUILDING TO TAKE THE BALLASTED LOAD PLUS EQUIPMENT WEIGHT.

CUSTOMER:

PROJECT NAME:

PROJECT LOCATION:

MODULE:

OUTPUT:
SYSTEM:
RACKING:
AET RAYPORT G ECO

DO NOT SCALE DRAWING
REPORT ALL DISCREPANCIES
DRAWN: TJS
CHECKED: RGC
APPROVED: JEK
DATE: 03/11/14
DRAWING DESCRIPTION:
2 ROWS X 12 COLUMNS
ARRAY
SHEET NUMBER:
1 of 2
DRAWING NUMBER:
REVISION: