

**Breathe easy with accelerated installations.**

The Aire® racking system has been carefully engineered to streamline every part of the installation process. We've eliminated tiresome hassles, so that you get off the roof and on to your next project faster than ever.

Aire® retains the strength and reliability that IronRidge installers depend on. It also takes wire management to the next level with the first (and only) NEC-compliant rail, formally approved and listed as a cable tray.



**Strength Tested**

All components have been evaluated for superior structural performance.



**PE Certified**

Pre-stamped engineering letters are available online for most states.



**Class A Fire Rating**

Certified to maintain the fire resistance rating of the existing roof structure.



**Approved Cable Tray**

Open channel listed to NEMA VE 1, certified to hold PV and DG cables.



**UL 2703 Listed System**

Entire system and components meet the latest effective UL 2703 standards.

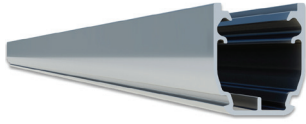


**25-Year Warranty**

Products are guaranteed to arrive without any impairing defects.

## Rails

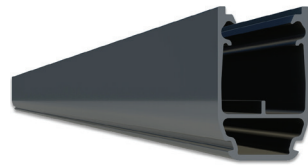
### Aire® A1 Rail



The lighter, open Aire® rail for standard conditions.

- 6' spanning capability
- Wire management tray
- Mill or anodized black

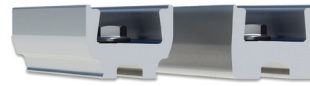
### Aire® A2 Rail



The tougher, open Aire® rail for higher load capacity.

- 8' spanning capability
- Wire management tray
- Mill or anodized black

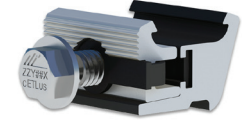
### Aire® Rail Ties



Structurally connect and bond Aire® Rails together.

- Reinstallable, up to 5x
- Internal splice design
- No more splice rules

### Aire® Dock



Connects Aire® Rails to attachments with ease.

- Clicks on, slides easily
- Drops into open slots
- Anodized assembly

## Clamps & Grounding

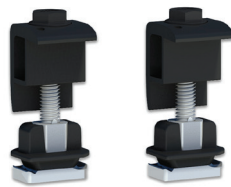
### Aire® Lock Mids



Securely bond between modules to Aire® Rails.

- Fits 30-40mm modules
- Utilizes UFO® design
- Minimal 1/2" gap

### Aire® Lock Ends



Securely bond modules to Aire® Rails along ends.

- Fits 30-40mm modules
- Easy rail engagement
- Clean aesthetics

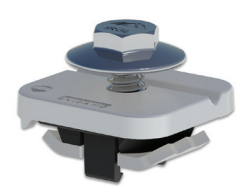
### Aire® Lock Stealth®



Securely bonds modules to rail ends, entirely hidden.

- Angled for easy install
- Robust tether leash
- Fits most modules

### Aire® Lug



Bonds Aire® Rails to grounding conductors.

- Simplified with single bolt
- Low-profile form factor
- Works with 10-6 AWG

## Accessories

### Aire® Caps



Block entry and provide a finished look to Aire® Rails.

- Stay secure on rail ends
- Symmetrical, with drain
- Cover rough-cut ends

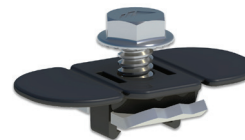
### Aire® Clip



Keeps wiring contained in open Aire® Rail channels.

- No module interference
- Simple press-in design
- Slot for easy removal

### Aire® MLPE Mount



Securely bonds MLPE and accessories to Aire® Rails.

- Glove-friendly installation
- Lays flush in rail channel
- Low profile form factor

### Aire® All Tile Hook



Attaches rails to tile roofs, with Aire® Dock included.

- Works on flat, S, & W tiles
- Single-socket installation
- Optional deck flashing

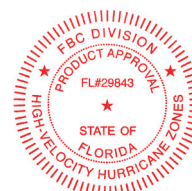
## Resources



### Design Assistant

Quickly go from rough layout to fully engineered system.

Go to [IronRidge.com/design](https://www.ironridge.com/design)



### Approved for FL Hurricane Zones

Aire® has Florida Product Approval. Additional details can be found on the Florida Building Code website.

Learn More at [bit.ly/florida-aire](https://bit.ly/florida-aire)